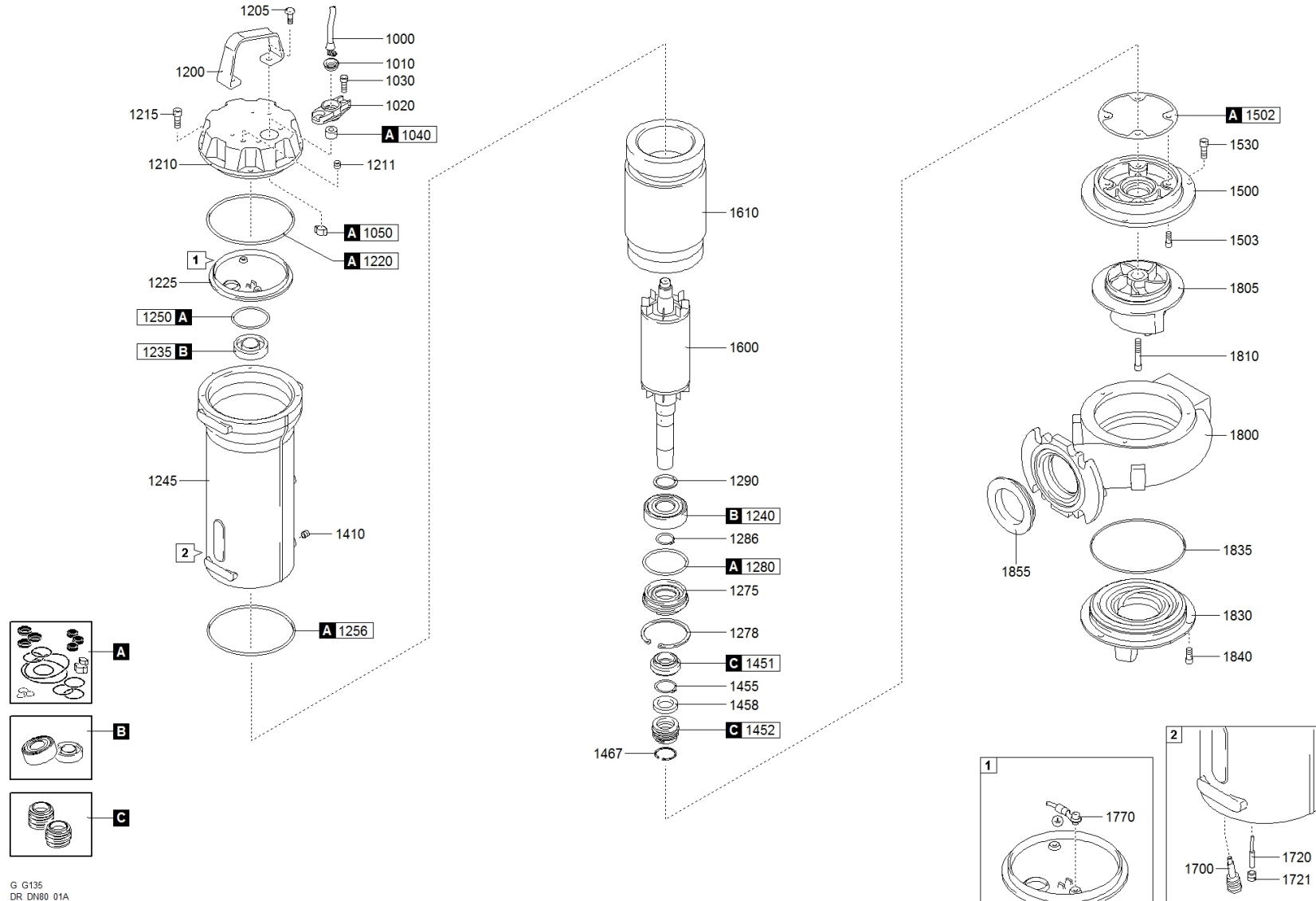


1463.001 - DRG 300/4/80 GOET5 NGTAB51040S00NN



G G135
DR DN80 01A



water solutions



1463.001 - DRG 300/4/80 GOET5 NGTAB51040S00NN

	Code	Description		Q.ty
A	601052001	GASKETS KIT	806125	1
C	602052091	MECHANICAL SEALS KIT	806127	1
B	604052001	BEARINGS KIT	806131	1
1000	25020340151000001	POWER CABLE	802306	1
1010	235467216820	RING NUT [POWER CABLE]	711016 or 802074	1
1020	235423622710	CABLE GLAND [POWER CABLE]	802276	1
1030	270830810203200000	SCREW - CABLE GLAND [POWER CABLE]	802093 or 802095	6
1040	235672720680	RUBBER GASKET [POWER CABLE]		1
1050	2732001400000	COLLAR CLAMP [POWER CABLE]	802081	1
1200	235232426544	HANDLE		1
1205	270830810201200000	SCREW [HANDLE >> COVER]	802319	2
1211	270139510104000000	CAP [TIGHTNESS TEST]	802099	1
1215	270830810203200000	SCREW [COVER >> MOTOR CASE]	802093 or 802095	6
1220	271770139035000000	GASKET [COVER >> UPPER BEARING HOLDER]		1
1225	230617025857	UPPER BEARING HOLDER		1
1235	2729062030200000	UPPER BEARING	711360 or 802083	1
1240	2729063060200000	LOWER BEARING	710970 or 802082	1
1245	231017025901	MOTOR CASE		1
1250	271770040952620000	GASKET [UPPER BEARING]		1
1256	271770120018000000			1
1275	23915074032027877	LOWER BEARING FLANGE		1
1278	2703207502000000	SEEGER [LOWER BEARING FLANGE]		1
1280	271770068026000000	GASKET [LOWER BEARING FLANGE]		1
1286	2703303001000000	SEEGER [LOWER BEARING >> LOWER BEARING FLANGE]	802102	1
1290	270220300422500000	DISTANCE RING [LOWER BEARING]	802098	1
1410	270139510104000000	CAP [OIL CHAMBER]	802099	1
1451	230000010250000000	1st MECHANICAL SEAL		1
1452	230001810250000000	2nd MECHANICAL SEAL		1
1455	2703302501000000	SEEGER [1st MECHANICAL SEAL >> 2nd MECHANICAL SEAL]	802101	1
1458	270533762109027892	DISTANCE RING [1st MECHANICAL SEAL >> 2nd MECHANICAL SEAL]		1
1467	2703206202000000	SEEGER [2nd MECHANICAL SEAL]		1
1500	236212002527852	PUMP PLATE		1
1502	2750911526543	GASKET [PUMP PLATE]		1
1503	270830810203200000	SCREW [PUMP PLATE >> MOTOR CASE]	802093 or 802095	6
1530	270830810203200000	SCREW [PUMP PLATE >> PUMP BODY]	802093 or 802095	6
1600	230235022426572	SHAFT WITH ROTOR		1
1610	231102243021000000	WOUND STATOR		1
1800	21251020030519090	PUMP BODY	600647	1

1805	21411OC195NN27999	IMPELLER	806111	1
1810	270830810453200000	LOCKING IMPELLER		1
1830	2162120023193	SUCTION FLANGE		1
1835	2750920022190	GASKET [PUMP BODY >> SUCTION FLANGE]	710949	1
1840	270830810203200000	SCREW [SUCTION FLANGE >> PUMP BODY]	802093 or 802095	6
1855	2750730403100	DISCHARGE GASKET	711032	1